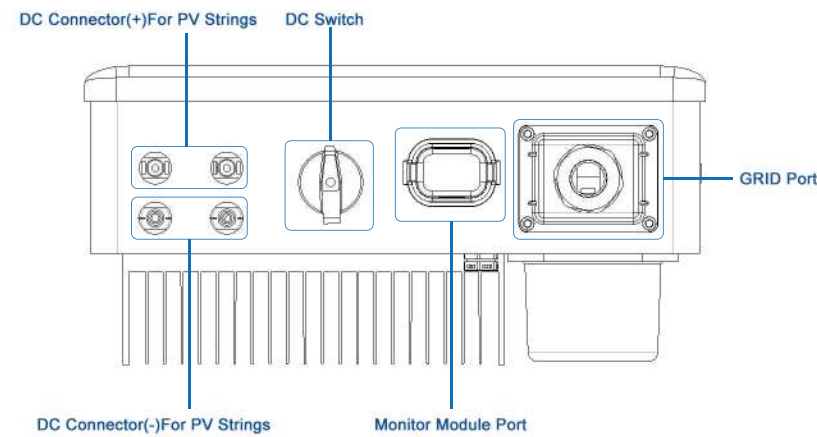


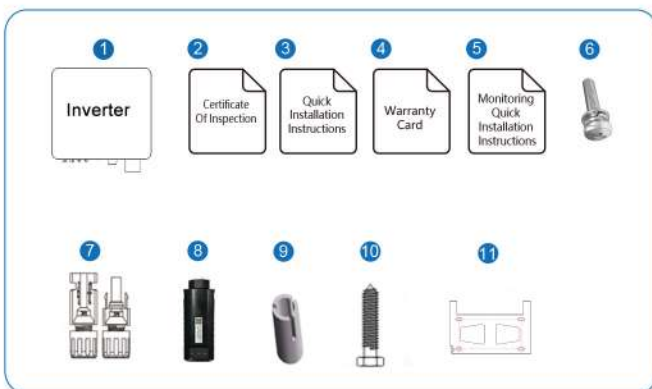
# 1. OVERVIEW

The following picture shows the assignment of the individual connection areas on the bottom of the inverter.



# 2. PACKAGE LIST

On receiving the inverter, please check to make sure the packing and all components are not missing or damaged. Please contact your dealer directly for supports if there is any damage or missing components.

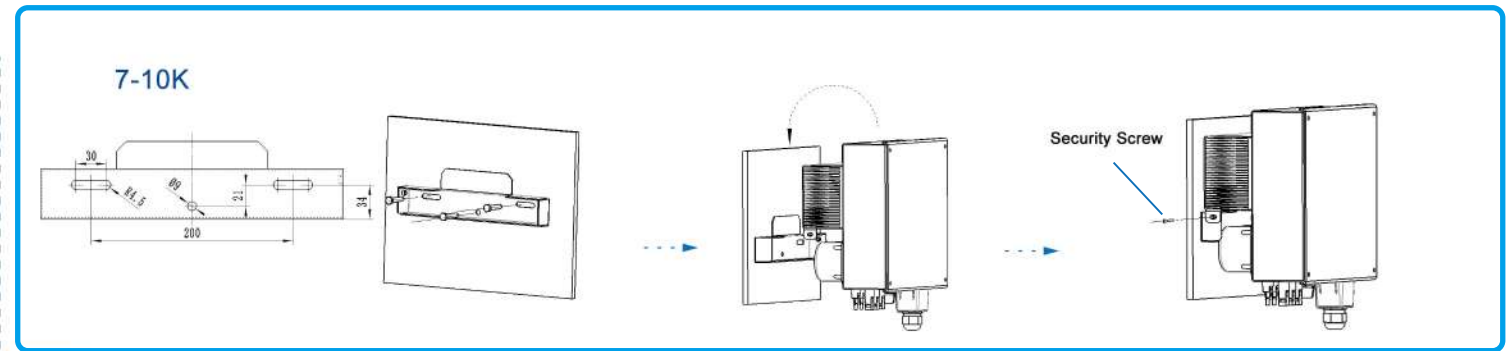
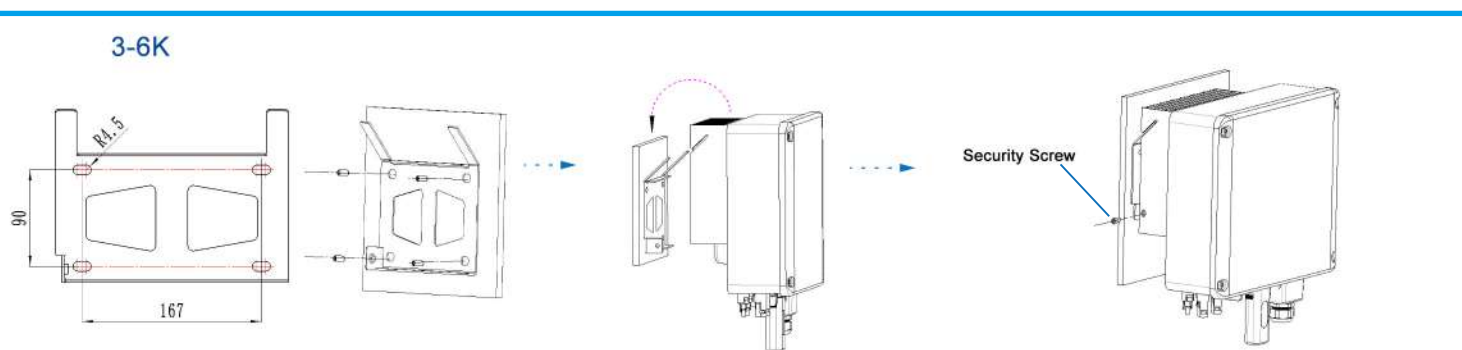


No.	Qty	Items	No.	Qty	Items
1	1	Inverter	11	1	Wall Mounting Bracket
2	1	Certificate Of Inspection			
3	1	Quick Installation Instructions			
4	1	Warranty Card			
5	1	Monitoring Quick Installation Instructions			
6	4	Screw			
7	2/3	DC Connector			
8	1	Monitor Module			
9	4	Expansion Tube			
10	4	Mounting Bracket Screw			

# 3. QUICK INSTALLATION

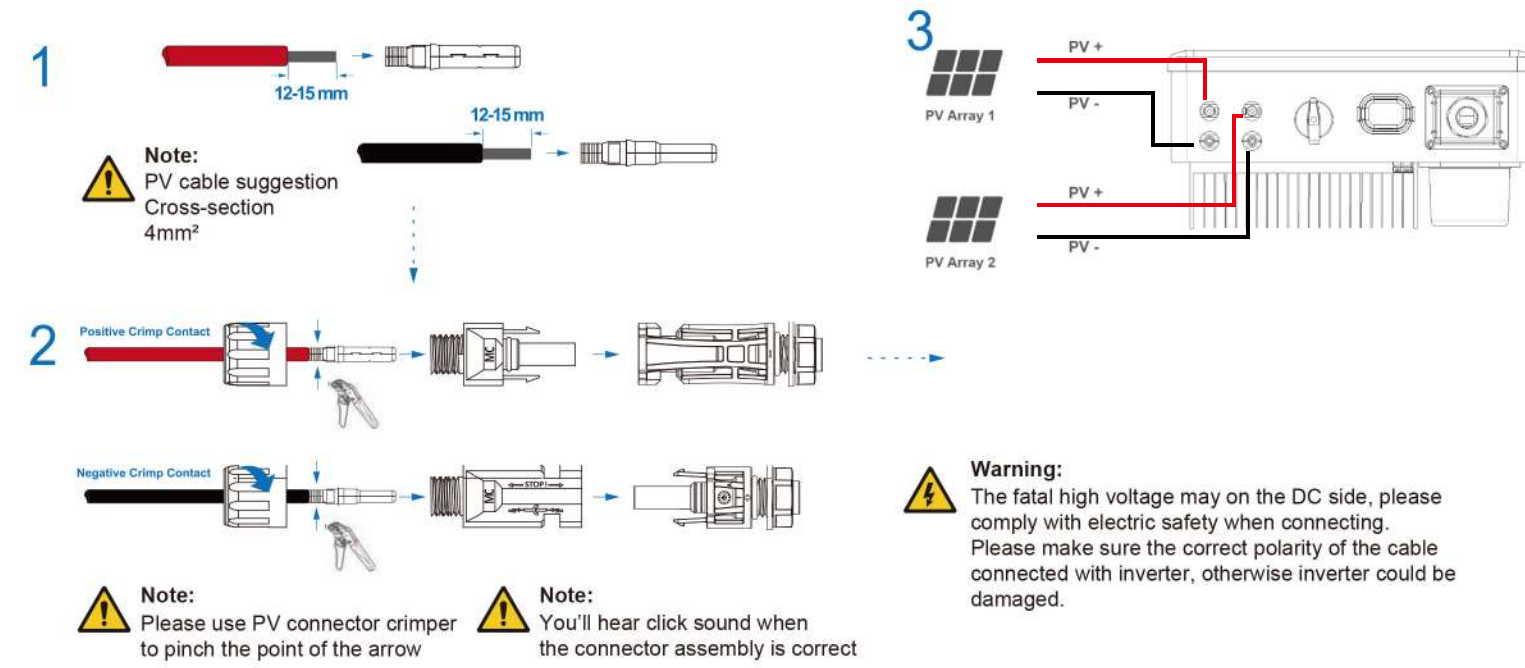
## A

### Mounting



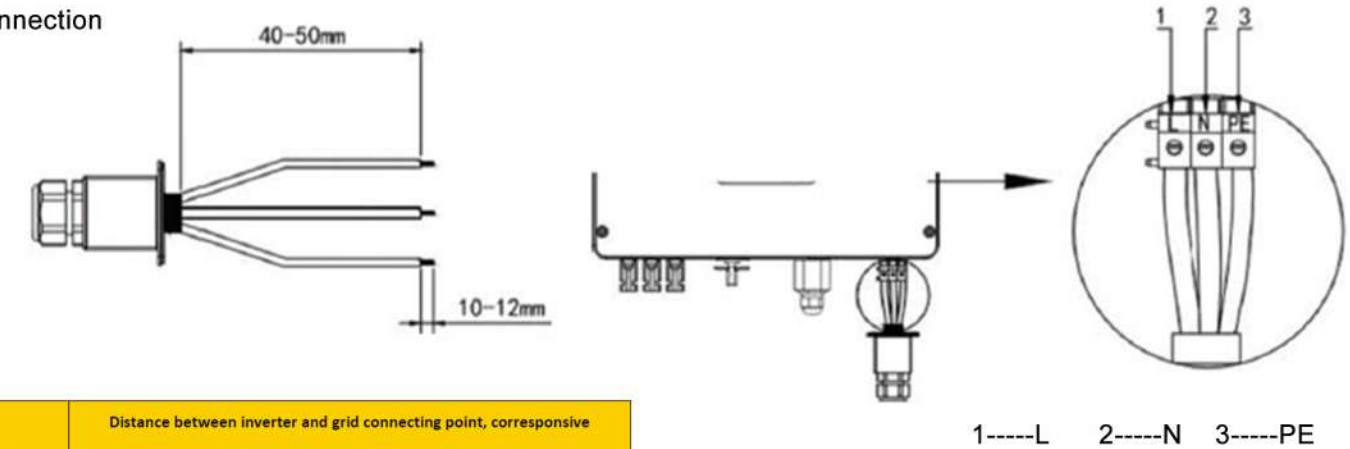
## B

### PV Connection



## C

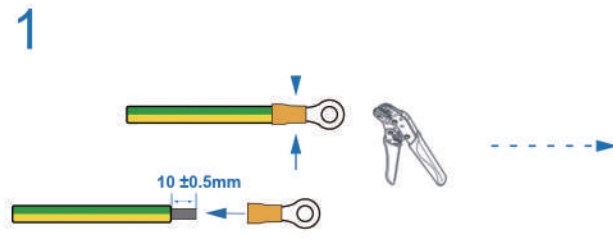
### AC Connection



Model	Distance between inverter and grid connecting point, corresponsive cable(cable diameter: mm 2 )			
	10-30m	30-50m	50-80m	Above 80m
AU3K1P	4	4	6	When there is only one inverter in the project, try to avoid distance between inverter and grid connecting point more than 80m. When there are multiple inverters in project, it can firstly use combiner box to combine outputs of inverters, then choose cable with bigger diameter.
AU4/5/6K1P	6	8	10	
AU8K1P	10	16	25	
AU10K1P	16	16	25	

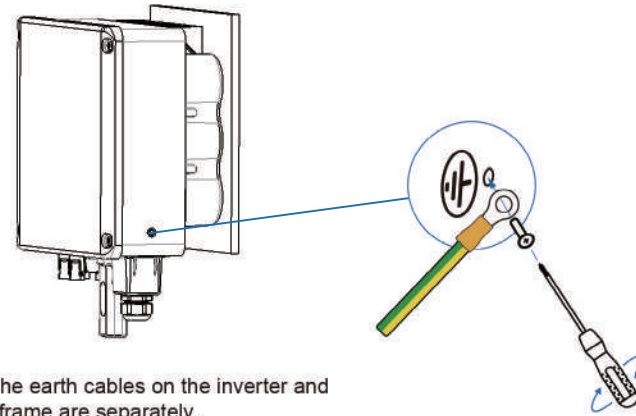
**D**

Earth Connection



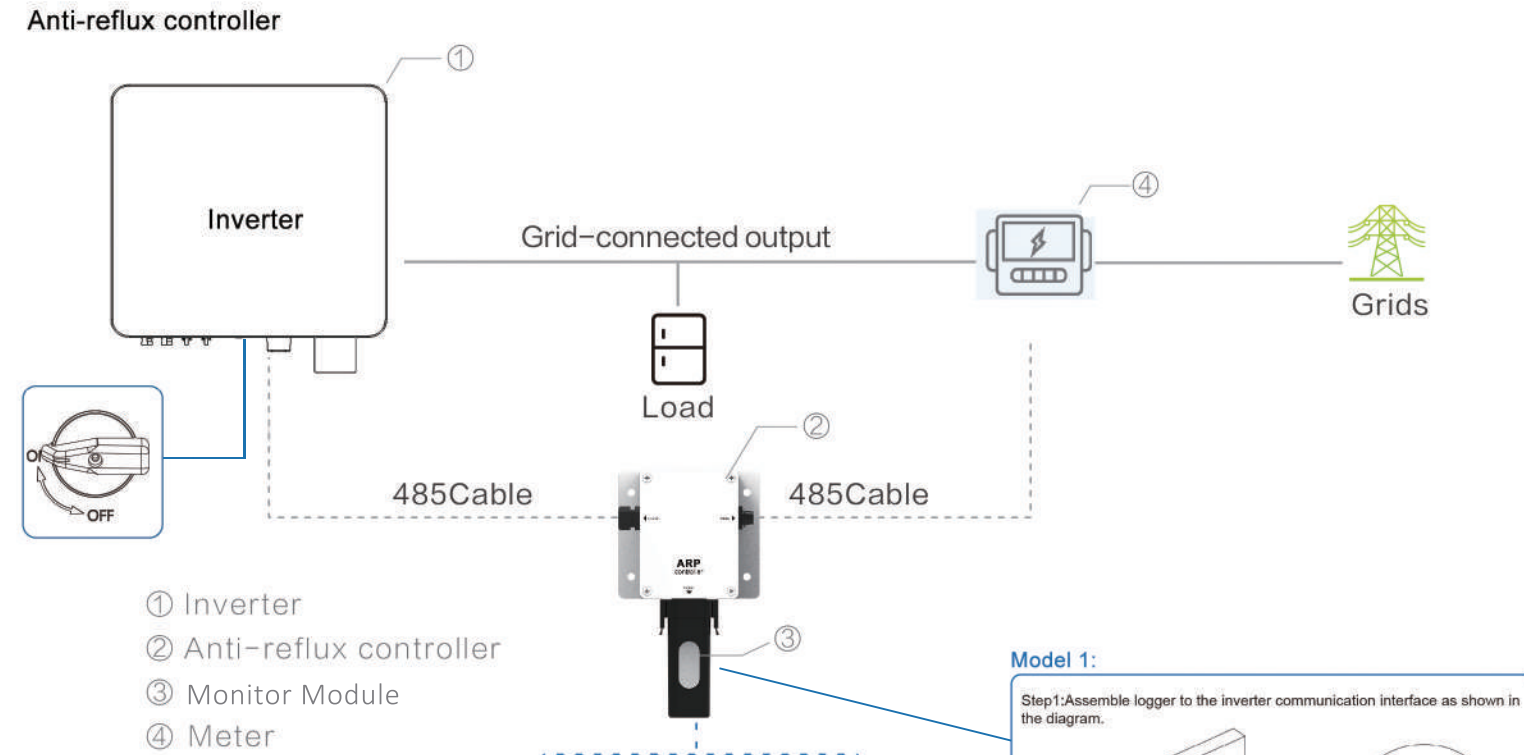
**Note:**  
Earth cable PE suggestion:  
Cross-section (Copper) 4-6mm<sup>2</sup> / 10AWG

**2** Fix the grounding screw to the grounding connection of the machine housing.

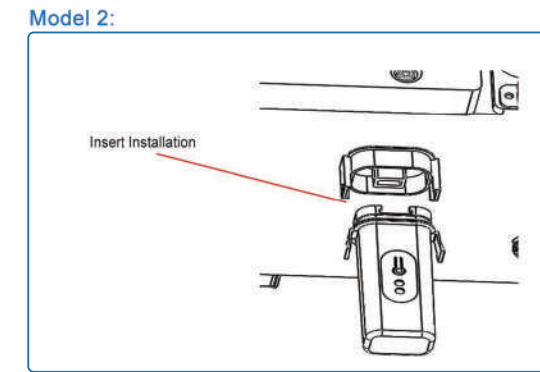
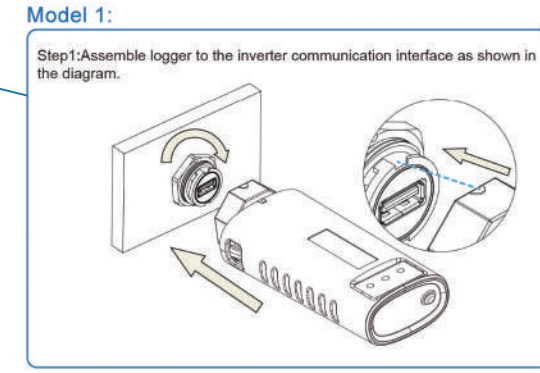


**Note:**  
Make sure the earth cables on the inverter and solar panel frame are separately.

**E**



- ① Inverter
- ② Anti-reflux controller
- ③ Monitor Module
- ④ Meter



Configure the Monitor Module, router, account registration, etc. Please check the WiFi connection manual for details.